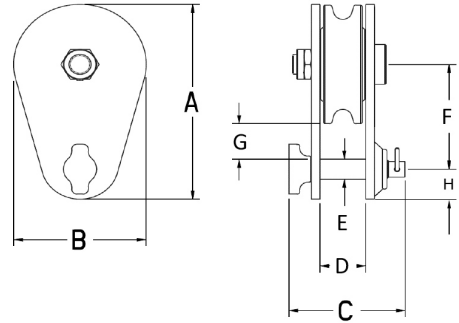
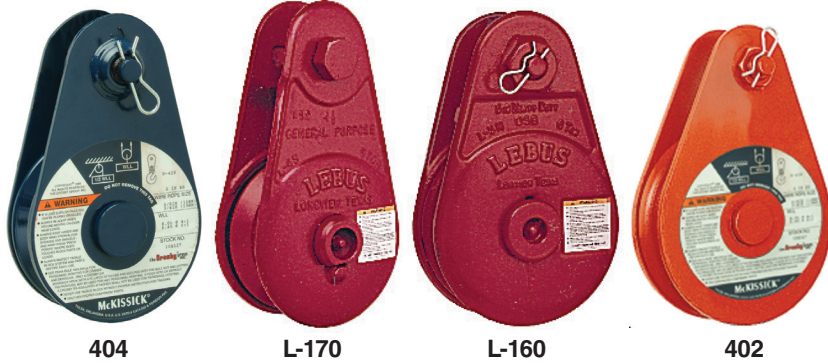


SNATCH BLOCK, TAIL BOARD, SINGLE SHEAVE, 2-12t

Fatigue Rated®



- Opening feature permits easy insertion of rope without reeving. Bolt for opening feature is retained, to ensure no lost bolts.
- All sizes feature sheave grooves suited for a range of wireline diameters.
- Meets or exceeds all requirements of ASME B30.26. Importantly, these blocks meet other critical performance requirements including fatigue life and material traceability, not addressed by ASME B30.26.
- 402 snatch blocks feature a significant reduction in weight compared to snatch blocks made of non-alloy materials.
- Crosby's Engineered Solutions Group is ready to discuss your requirements and help select or develop the ideal block for your application. Visit thecrosbygroup.com/engineeredolutions for more information.



APPLICATION AND WARNING INFORMATION SECTION 17

Working Load Limit (t)	Wire Rope Diameter (in)	Sheave Diameter (in)	Bearing Code	Weight Each (lb)	Model No.	Stock No.	Dimensions (in)							
							A	B	C	D	E	F	G	H
2 metric tons														
2	5/16 - 3/8	3	BB	3	404	102016	4.87	3.00	2.64	1.04	0.50	2.62	0.87	0.75
4 metric tons														
4	3/8 - 1/2	4.5	BB	7	404	102025	7.75	4.25	3.13	1.56	0.75	4.25	1.63	1.38
5 metric tons														
5	3/8 - 1/2 ‡	4	BB	11	L-170	599846	8.38	4.50	2.94	1.57	0.85	4.69	2.25	1.44
5	3/8 - 1/2 ‡	4	RB	11	L-170	599855	8.38	4.50	2.94	1.57	0.85	4.69	2.25	1.44
6 metric tons														
6*	3/8 - 1/2	5	BB	13	L-160	599542	8.25	5.12	3.69	1.53	0.75	4.25	1.38	1.44
6*	3/8 - 1/2	5	RB	13	L-160	599551	8.25	5.12	3.69	1.53	0.75	4.25	1.38	1.44
8 metric tons														
8	5/8 - 3/4	6	BB	15	404	102098	9.87	6.00	4.19	1.80	1.00	5.12	1.62	1.75
8	5/8 - 3/4	6	RB	15	404	102114	9.87	6.00	4.19	1.80	1.00	5.12	1.62	1.75
8	5/8 - 3/4	8	BB	21	404	102169	11.93	8.12	4.19	1.80	1.00	6.12	1.62	1.75
8	5/8 - 3/4	8	RB	21	404	102187	11.93	8.12	4.19	1.80	1.00	6.12	1.62	1.75
8	5/8 - 3/4	10	BB	29	404	102230	14.00	10.12	4.19	1.80	1.00	7.19	1.69	1.75
8	5/8 - 3/4	10	RB	29	404	102258	14.00	10.12	4.19	1.80	1.00	7.19	1.69	1.75
8	5/8 - 3/4	12	BB	36	404	102301	16.81	12.12	4.19	1.80	1.00	9.00	2.50	1.75
8	5/8 - 3/4	12	RB	36	404	102329	16.81	12.12	4.19	1.80	1.00	9.00	2.50	1.75
12 metric tons														
12*	5/8 - 3/4	5.75	BB	29	L-160	599604	9.97	6.00	4.19	1.72	1.00	5.22	1.85	1.75
12*	5/8 - 3/4	5.75	RB	29	L-160	599613	9.97	6.00	4.19	1.72	1.00	5.22	1.85	1.75
12	3/4 - 7/8	6	BB	15	402	179238	9.87	6.00	4.19	1.80	1.00	5.12	1.62	1.75
12	3/4 - 7/8	6	RB	15	402	179283	9.87	6.00	4.19	1.80	1.00	5.12	1.62	1.75
12	3/4 - 7/8	8	BB	21	402	179318	11.93	8.12	4.19	1.80	1.00	6.12	1.62	1.75
12	3/4 - 7/8	8	RB	21	402	179363	11.93	8.12	4.19	1.80	1.00	6.12	1.62	1.75
12	3/4 - 7/8	10	BB	29	402	179434	14.00	10.12	4.19	1.80	1.00	7.19	1.69	1.75
12	3/4 - 7/8	10	RB	29	402	179498	14.00	10.12	4.19	1.80	1.00	7.19	1.69	1.75

4:1 Design Factor. *3.5:1 Design Factor. ‡ Special Dual Groove Sheave also accepts 1-1/4" Manilla Rope.